



KIT PART NUMBER 4311144

INSTRUCTIONS FOR INSTALLING A REPLACEMENT SOLENOID AND STOP PIN IN A MODEL 430 SHOPPERTRON

CHECK THE PARTS RECEIVED IN THE KIT WITH THE PARTS LIST IN THESE INSTRUCTIONS. IF ANY PARTS ARE MISSING, CONTACT THE NATIONAL VENDORS PARTS DEPARTMENT IMMEDIATELY.

Read these instructions carefully before installing the kit.
Keep these instructions for part numbers and for future reference.

This kit contains the following:

INDEX	PART NUMBER	DESCRIPTION	QUANTITY
1	4311108	STOP PIN ASSEMBLY - 120 V	1
2	9900106	SCREW #8-32 X 3/3 ACORN HEX HD S/TAP	5
3	4319000	STOP PIN JUMPER HARNESS	1
4	4311104	COVER ASSEMBLY - STOP PIN	1
-	4310068	KIT INSTRUCTIONS	1

Proceed as follows (see figure 1):

1. Turn the machine power switch OFF.
2. Remove and discard the existing solenoid cover plate and solenoid stop pin assembly.
3. Unscrew the safety chain and harness clamp. Move the harness clamp with the harness to a position under the screw on the harness guard plate assembly.

NOTE

Take care that the harness does not pinch in the door when it closes. Dress the harness as needed.

4. Insert the new stop pin in the stop pin bushing, then rotate the stop pin assembly (1) over the blower motor.
5. Align the plastic stop pin bushing in the hole on top of the new stop pin bracket, and attach the new assembly with two screws (2): One screw in the existing front hole and one in the safety chain attaching hole.
6. Using the new stop pin bushing assembly as a template, center punch for a new attaching hole.
7. Remove the screws and rotate the stop pin assembly outward. Using a #29 drill, make a new attaching hole, and tap the hole with any #8-32 self-tapping screw.
8. Rotate the stop pin assembly back into position as before, place screws in two holes (leaving the safety chain hole open), and tighten.



9. Locate the two adjusting screws in the slotted holes to the right of the solenoid. Loosen, but **DO NOT REMOVE** the adjusting screws.
10. Pull the stop pin down and rotate the drum by hand so the pin rides on the bottom of the drum stop plates.
11. Place a .078 thick shim (or use approximately one to two dimes) under the plunger of the solenoid as shown.
12. Push up on the bottom of the solenoid to raise the assembly to the working position. Tighten the two adjusting screws.
13. Rotate the drum by hand until the stop pin seats into a hole. Remove the shim(s).
14. Turn the machine power switch ON.
15. Plug in the jumper harness (3) and test run the drum rotation and locating stop features. If needed, the motor switch can be adjusted for proper engagement.
16. Reattach the safety door stop chain using one screw (2).
17. Place the cover (4) on the front of the assembly and secure with two screws (2). Ensure that all wires come out the back left corner of the cover.

STOP SWITCH ADJUSTMENT (OPTIONAL)

Your stop pin assembly was properly adjusted at the factory, but in the event the turret cannot find its home position, perform the stop switch adjustment procedure (see figure 1):

1. Remove electrical power from the machine.
2. Remove the stop pin assembly from your machine.
3. Remove the cover and loosen both stop switch mounting screws.
4. Unhook one end of the spring.
5. Rotate the stop delay cam until the switch roller rides on the cam high point just below the cam dimple.
6. Rotate the switch until the switch roller bracket just bottoms out on the switch housing.
7. Tighten the switch mounting screws.
8. Replace the spring.
9. Replace the stop pin assembly in the machine.
10. Restore electrical power to the machine and verify that the turret can find its home position.

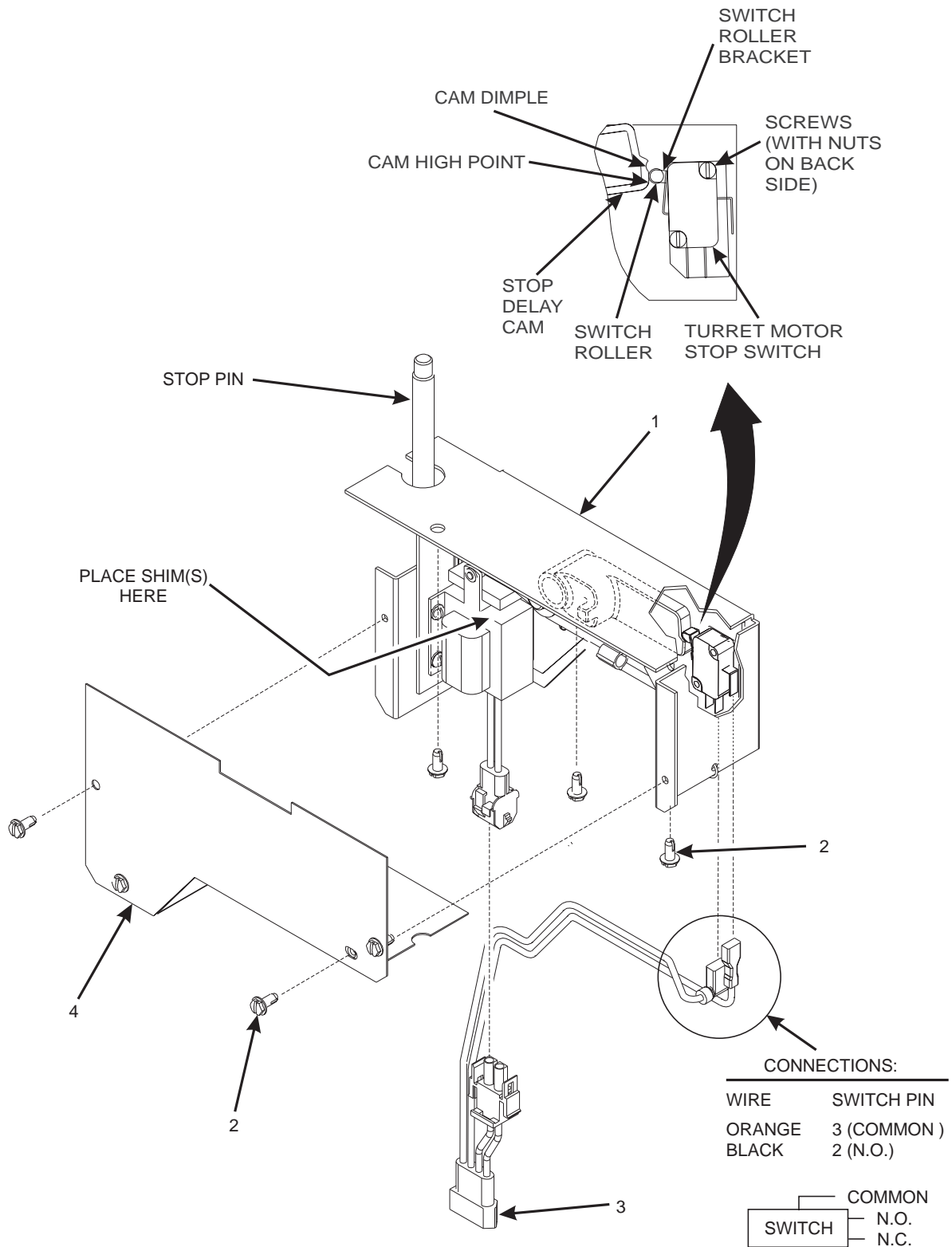


Figure 1